

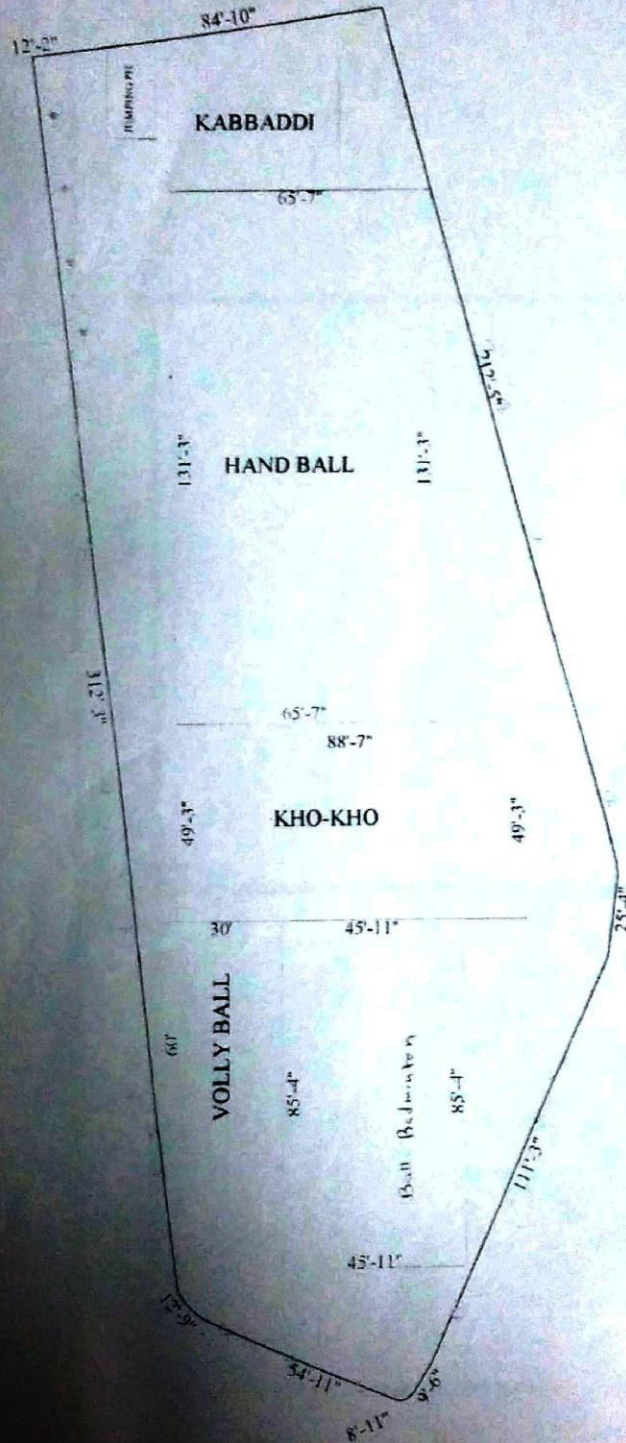
PDEA's
Annasaheb Magar Mahavidyalaya, hadapsar Pune – 28
Infrastructure

Sr.No.	Accommodation	Number	Area in Sq. ft./ acres
1	College Campus Area	1	5.2 acres
2	College Built up area	-	135657 sq. ft.
3	Woman's Hostel Area	1	53055.31 sq. ft.
4	Woman's Hostel built up Area	-	11500 sq. ft.
5	Principal's Office	1	1350 sq. ft.
6	Vice- -Principal	2	330 sq. ft.
7	Administration Office	1	2100 sq. ft.
8	Departments with staff rooms	18	3870 sq. ft.
9	Class rooms	43	44200 sq. ft.
10	Common Staff rooms	2	1750 sq. ft.
11	Library: 3 Reading room, Internet Lab, 2 Wash room, Cabin, Periodical Section	1	10364 sq. ft.
12	Examination Section	1	1350 sq. ft.
13	Laboratories.	37	35880 sq. ft
14	Research Centre	2	1050 sq. ft.
15	Research Laboratory	1	1800 sq. ft.
16	Seminar/Conference Hall	4	11000 sq. ft.
17	Student Welfare office	1	200 sq. ft.
18	IQAC	1	500 sq. ft.
19	Placement Cell	1	170 sq. ft.
20	Store Room	4	400 sq. ft.
21	Audio Visual Room	2	2700 sq. ft.
22	Consumer Co operative Store	1	200 sq. ft.
23	Security Guard Room	1	100 sq. ft.
24	Canteen	1	1200 sq. ft.
25	Vehicle Parking shed	3	3609 sq. ft.
26	Wash Rooms (Staff and Students)	16	3300 sq. ft.
27	Rest Room/ Health Care Centre	1	200 sq. ft
28	Botanical Garden	1	400 sq. ft
29	Play Ground	1	33386 Sq. ft
30	Tutorial spaces	4	1000 sq. ft
31	Gymkhana	1	1800 sq. ft.

PDEA's
Annasaheb Magar Mahavidyalaya, hadapsar Pune – 28
Infrastructure facilities (Extra-curricular activities)

S.N.	Particulars	Number	area/size	year of establishment	user rate.
1	Gymkhana ,Indoor games, Gymnasium	2	1800 sqft	1971	50 Student per day
2	Outdoor games	4	33389.65sqft	1971	
3	NSS Room	1	200 sq. ft	1973	2.5 unit (250)
4	NCC Room	1	200 sq. ft	1973	54 Cadet.
5	Cultural Activities Room	1	1000sq. ft	1971	500 Student per year
6	Auditorium (Shivaji Hall)	1	8050 sq. ft	2008	
7	Communication Skills development	1	340 sq. ft	2007	100
8	Yoga	1	590 sq. ft.	2010	100

**PROPOSED PLAY GROUND OF ANNA SAHEB MAGAR
HADAPSAR COLLEGE.**

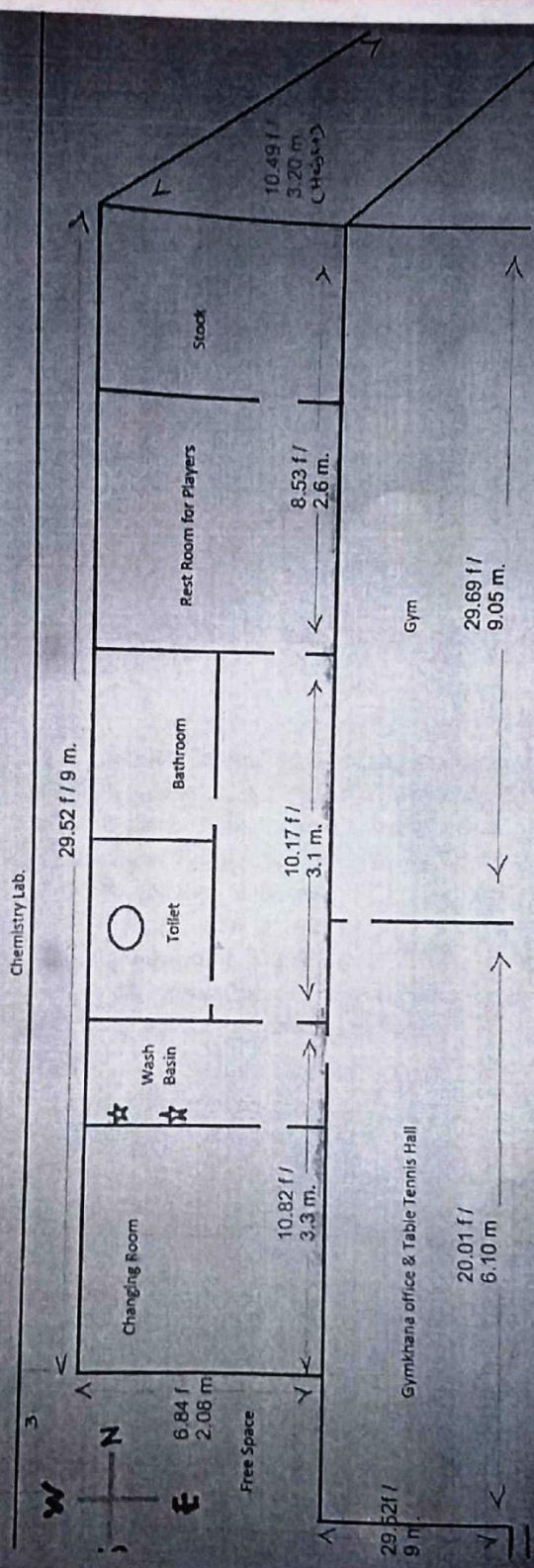


**TOTAL AREA
3102 SQM.
33386 SFT.**

NOTE: ALL DIMENSIONS ARE IN FT. INCH

SCALE	1:100
DATE	10/10/2024
BY	ANNA SAHEB MAGAR
FOR	HADAPSAR COLLEGE

GYMKHANA CHANGING AND WASH ROOM PLAN.



Construction Plan.

4.1.1

The Institution has adequate infrastructure and physical facilities for teaching- learning. viz., classrooms, laboratories, computing equipment etc.



AM Campus



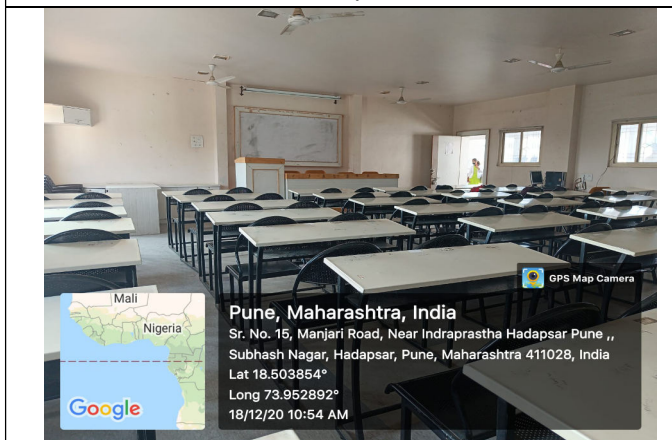
Arts Building



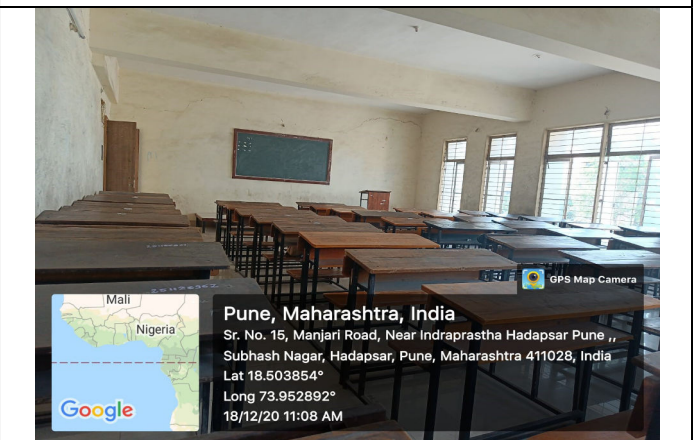
Chemistry Lab 03



Class room 04



Class room 05



Classroom 01



Classroom 2



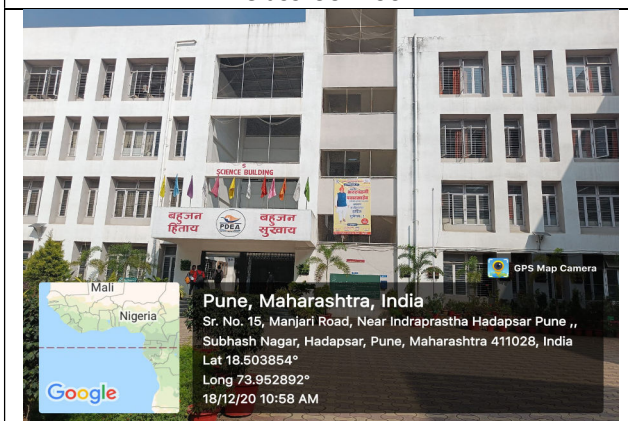
Classroom 3



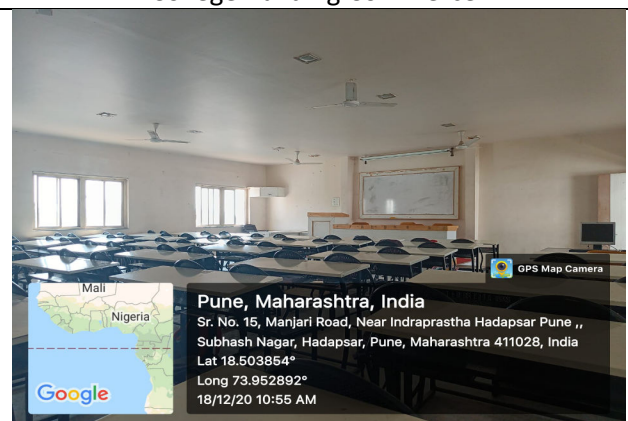
Classroom 06



College Building Commerce



College Building Science



Commerce Seminar Hall



Computer lab



Conference hall



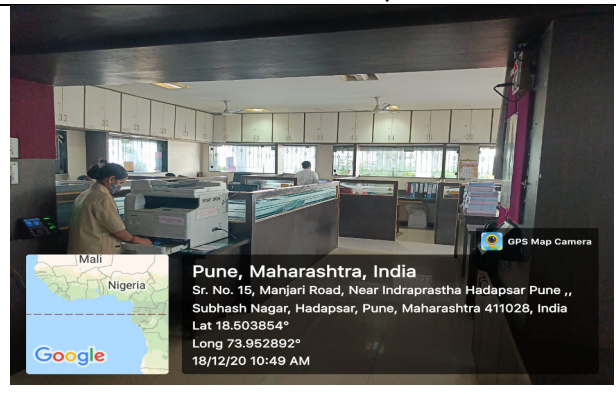
Lab 1



Lab Chemistry



Lab Physics



Office 2



Office



Physics Lab 02



Shivaji Hall 02



Shivaji Hall Building



Shivaji Hall